

# Taget - den 5. facade

Arkitektur

Konstruktion & træ - materiale og detaljer

Egne arbejder



# Lidt om tage



# Lucca



# Jørn Utzon - Fredensborg husene



# Arne Jacobsen - Munegårdsskolen - 1957



Arne Jacobsen - Søholm I - 1951



# Ib og Jørgen Rasmussen - Birkerød Rådhus 1979



# Kannikegården Ribe - Lundgård & Tranbjerg - 2016



# Papirøen - Kengo Kuma & Cobe



# Alvaro Siza - Portugal Pavilion - Expo 1998



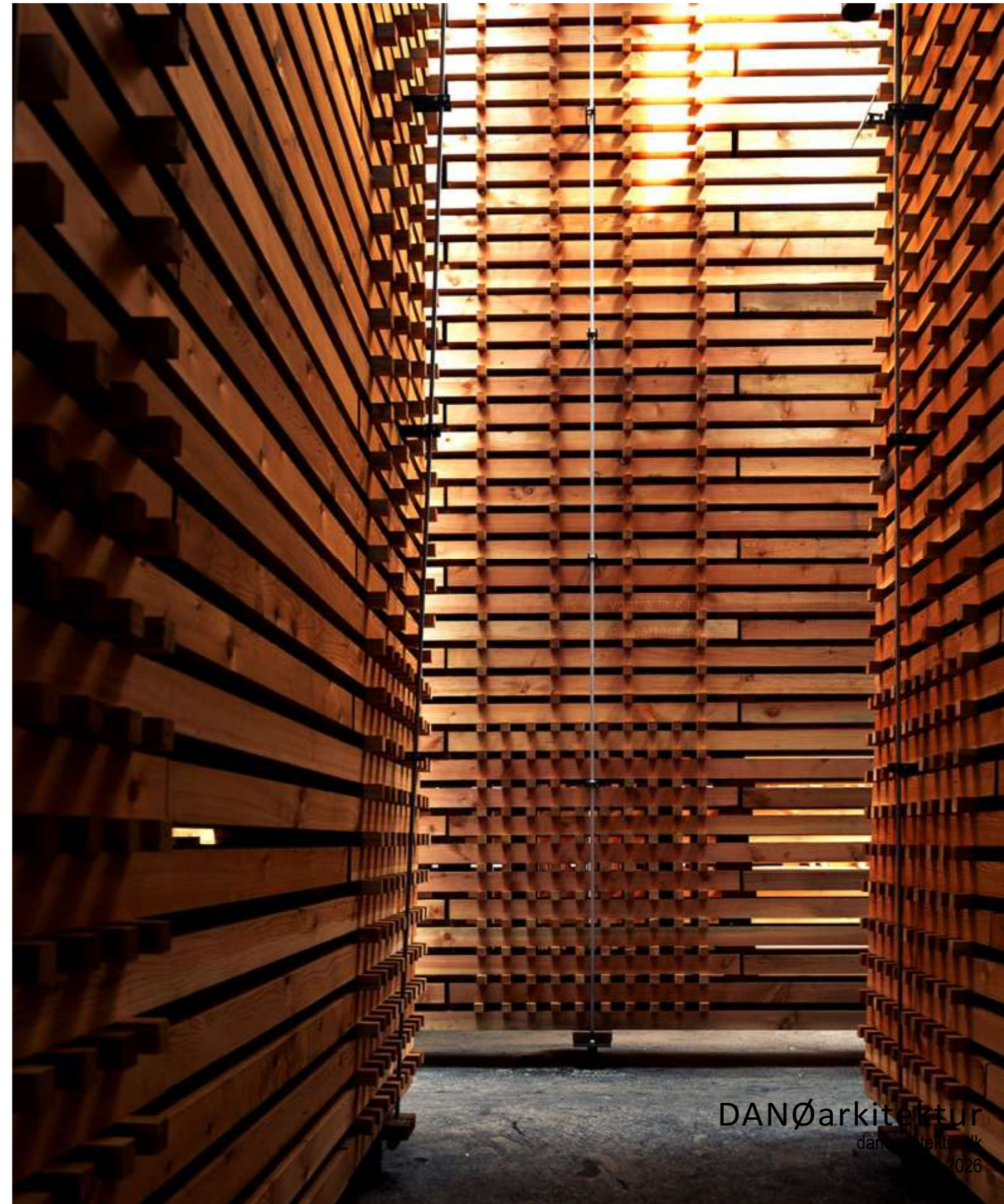
Enric Miralles - Barcelona 1985  
- Cubiertas del Vallés (Parets del Vallés)



- Enric Miralles (EMBT) - Barcelona
- Olympic archery range
  - Santa Catarina Market



# Peter Zumthor - Swiss Pavilion - Expo 2000



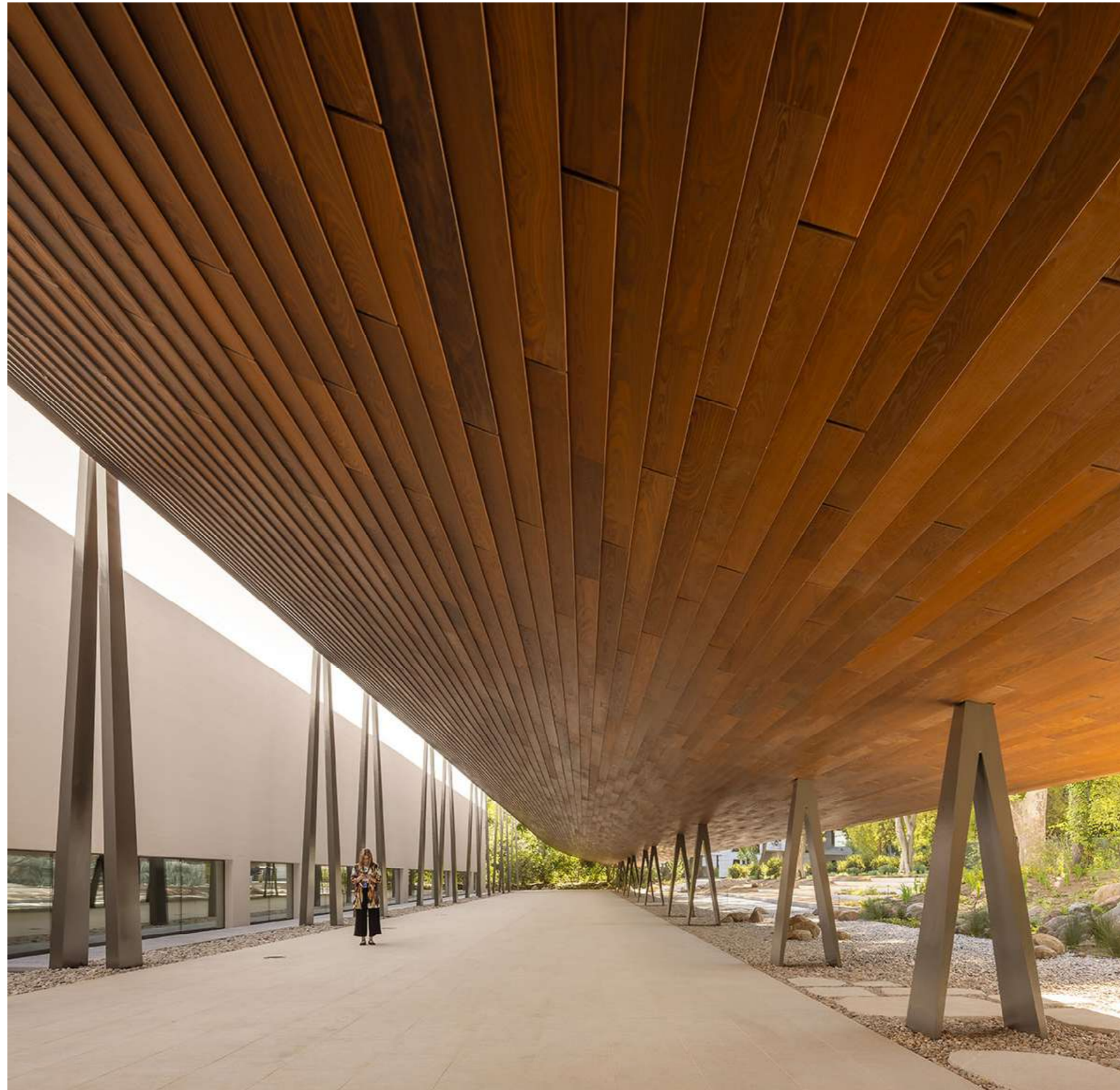


Ryoanji Zen Temple - Kyoto - 1450

# Kengo Kuma - olympic stadium - Tokyo 2020



# Kengo Kuma - Gulbenkain Museum of Modern Art - Lissabon 2024





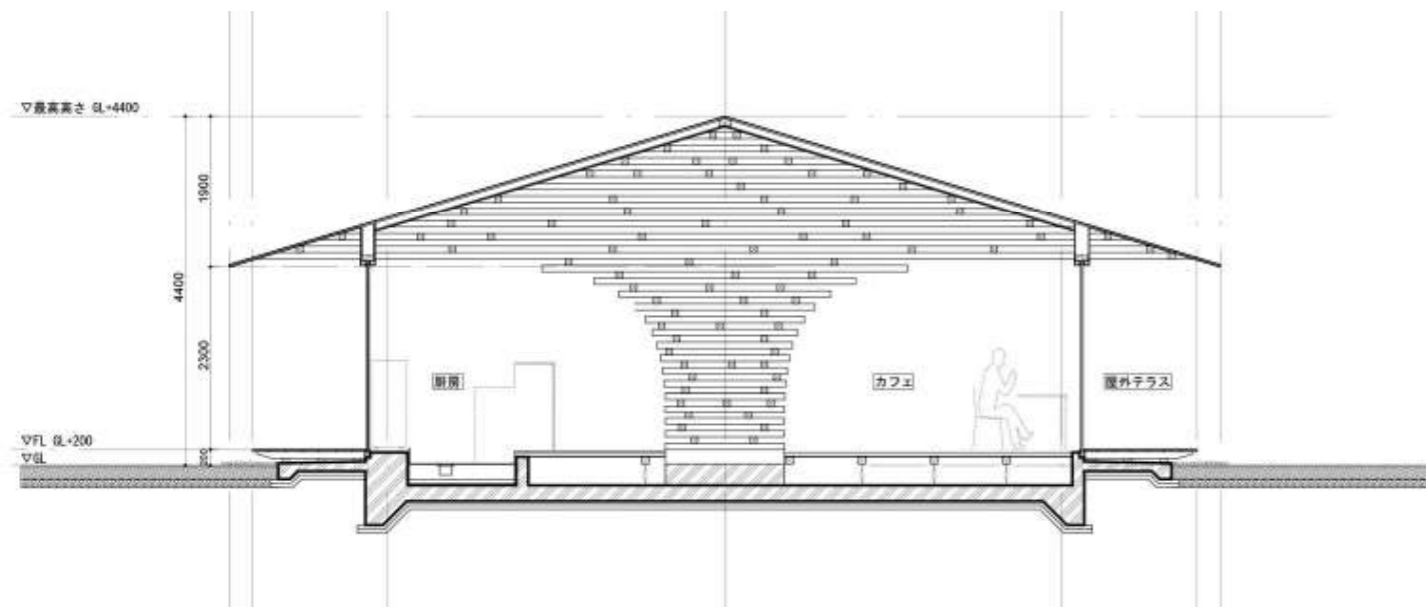
Enric Miralles (EMBT) Barcelona - Scottish Parliament - Edinburgh - 2004

# Arne Jacobsen - Benzintank 1937

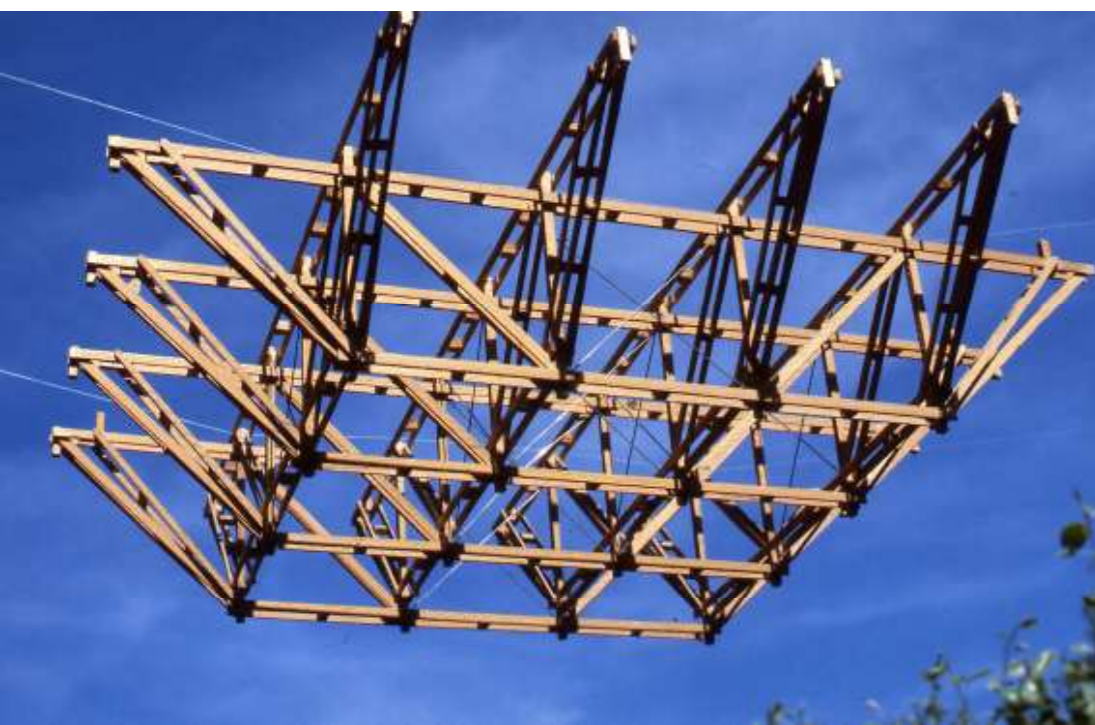


# Kengo Kuma - Café, COEDA House - 2017



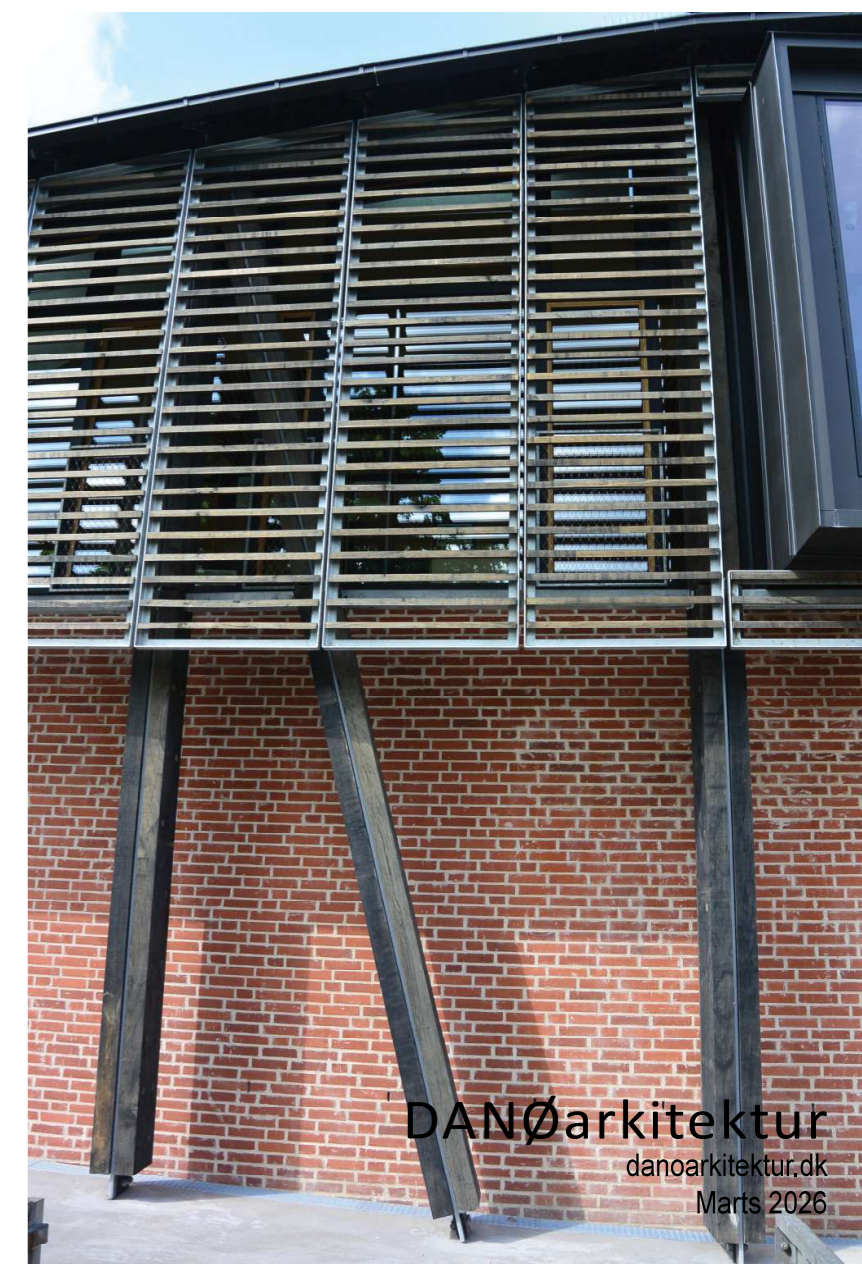
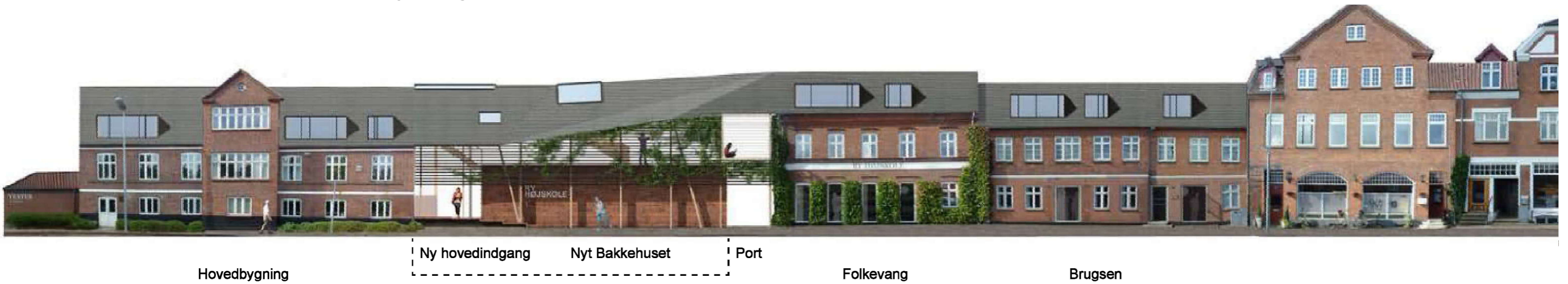


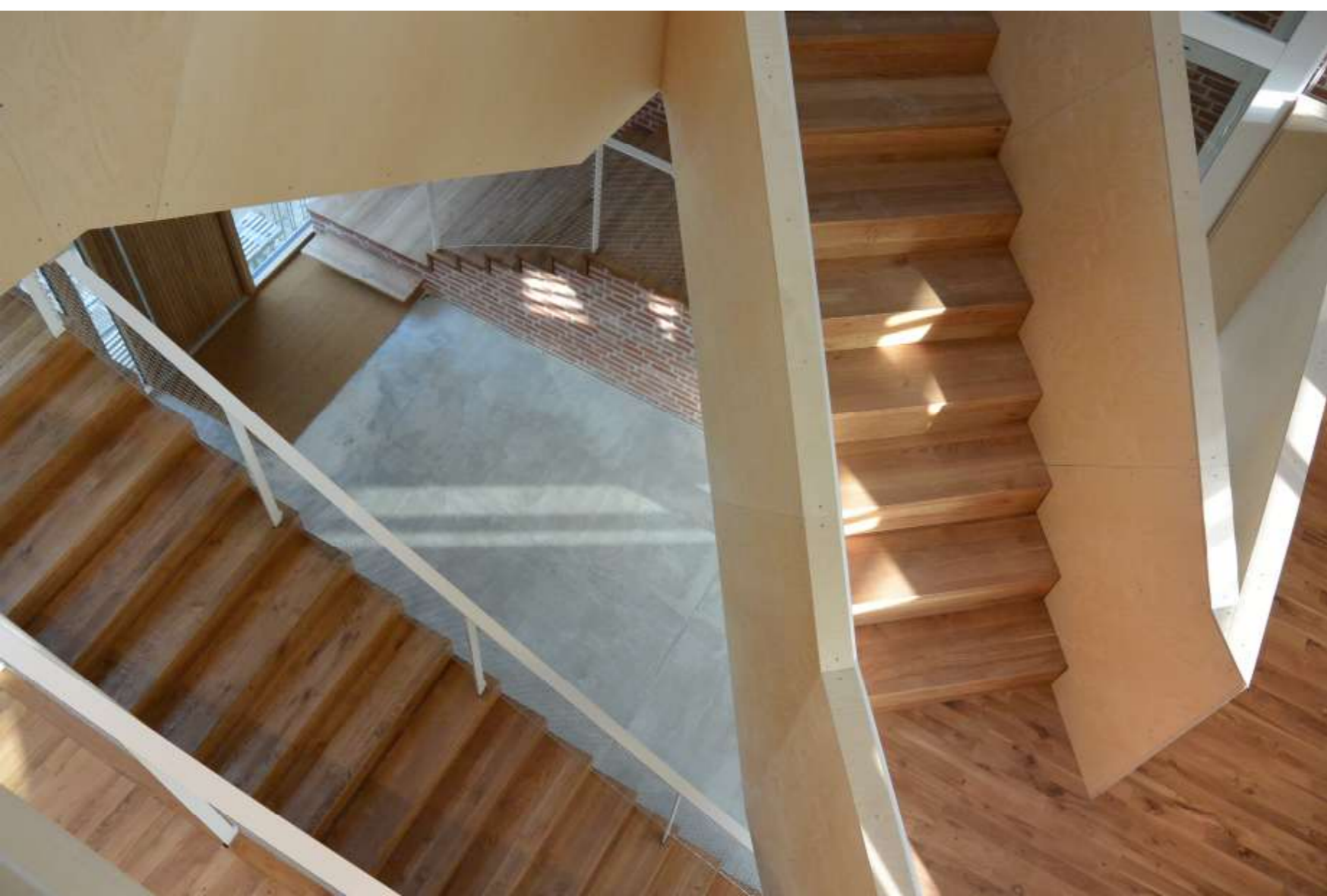
EXNER - Islev kirke 1970



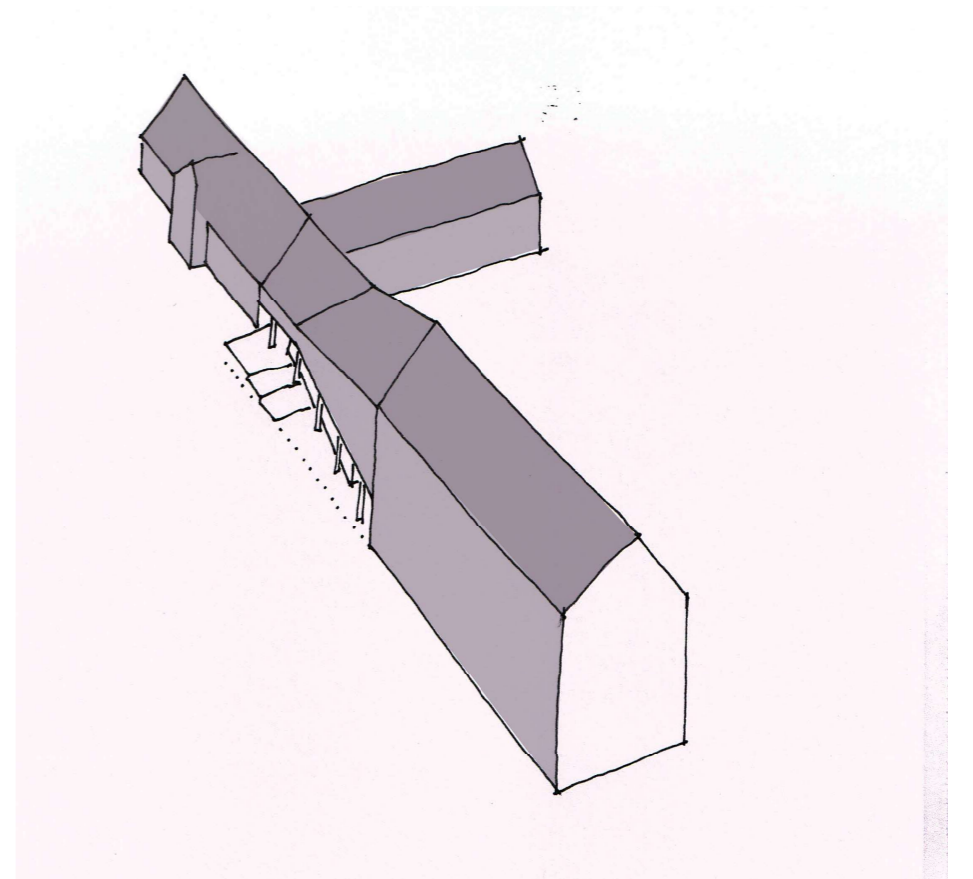
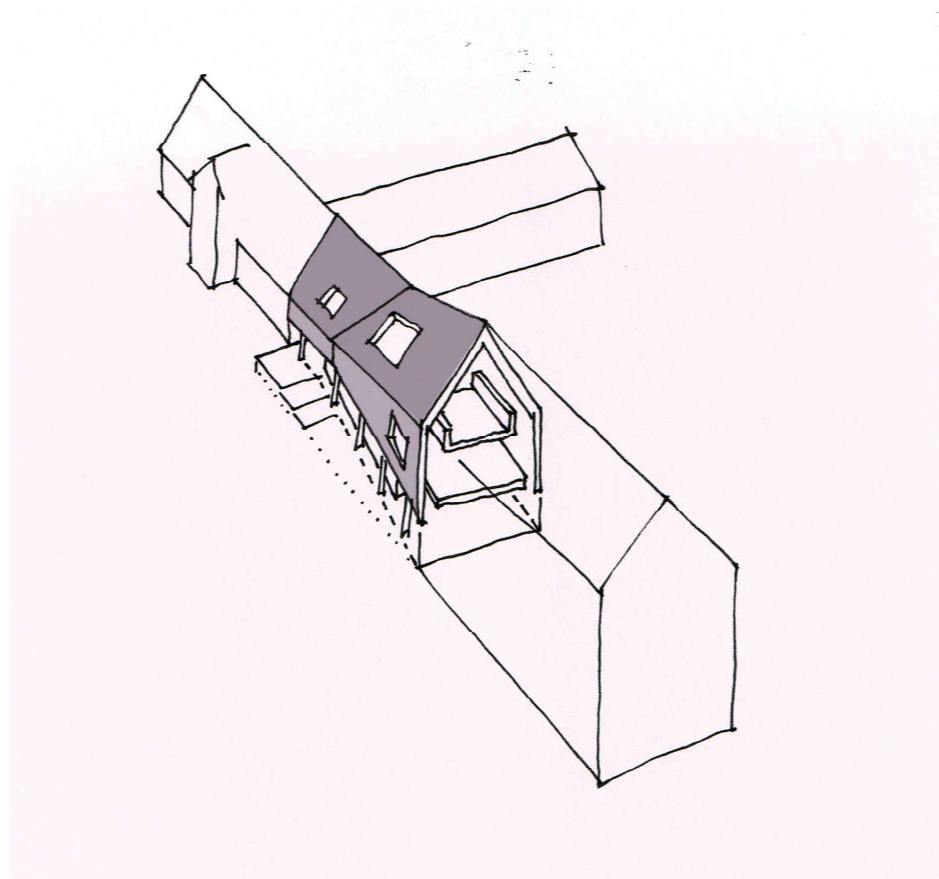
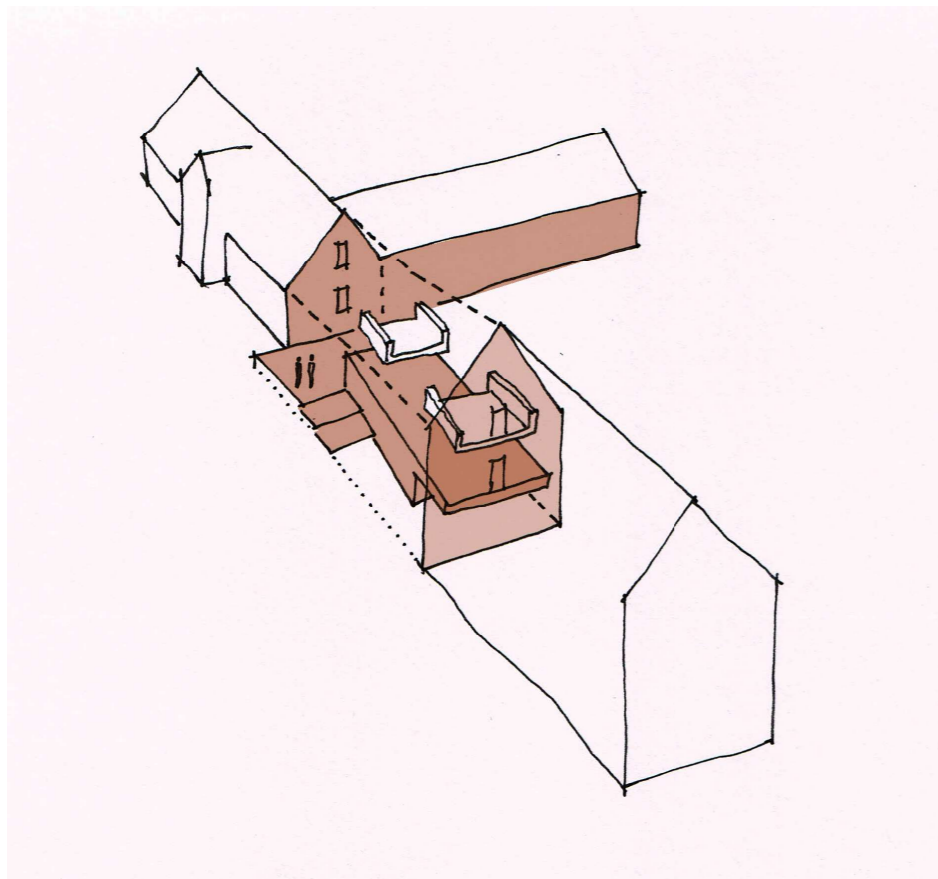
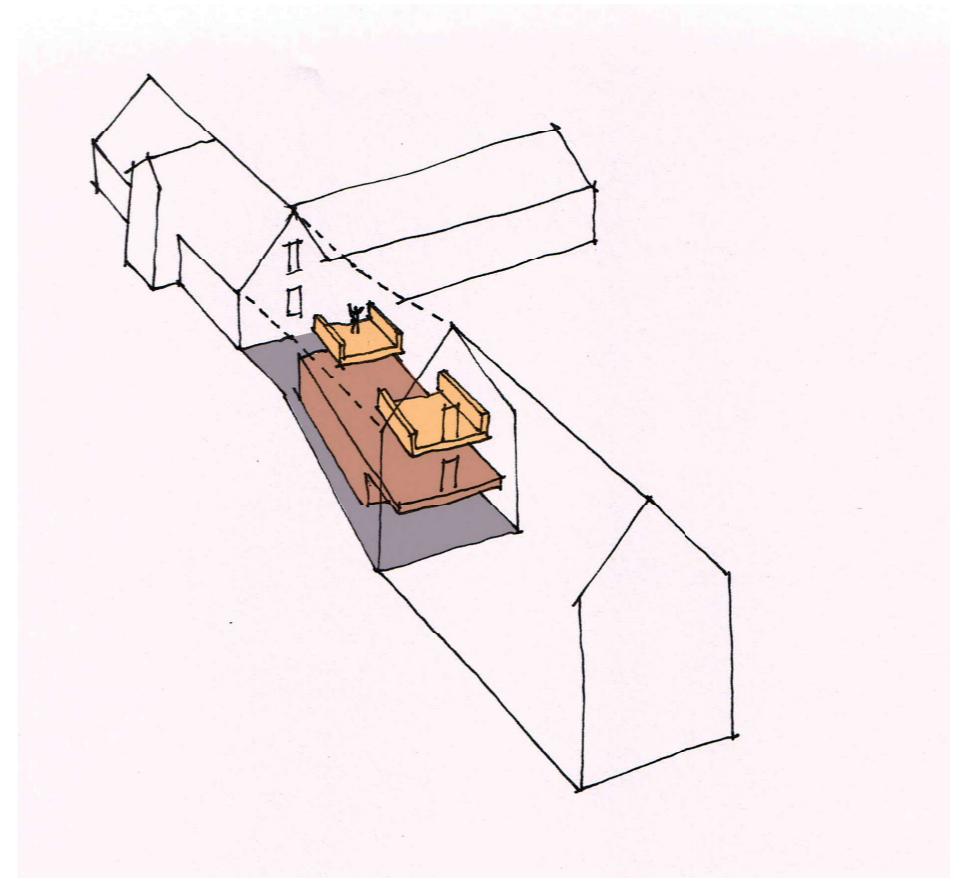
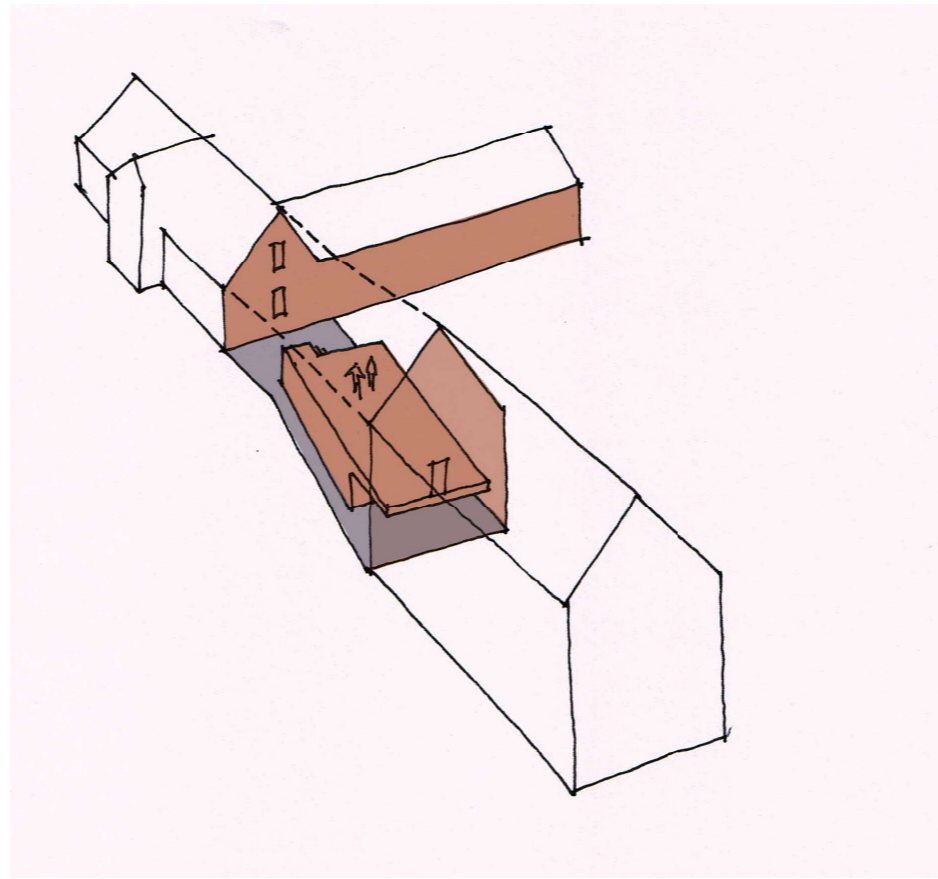
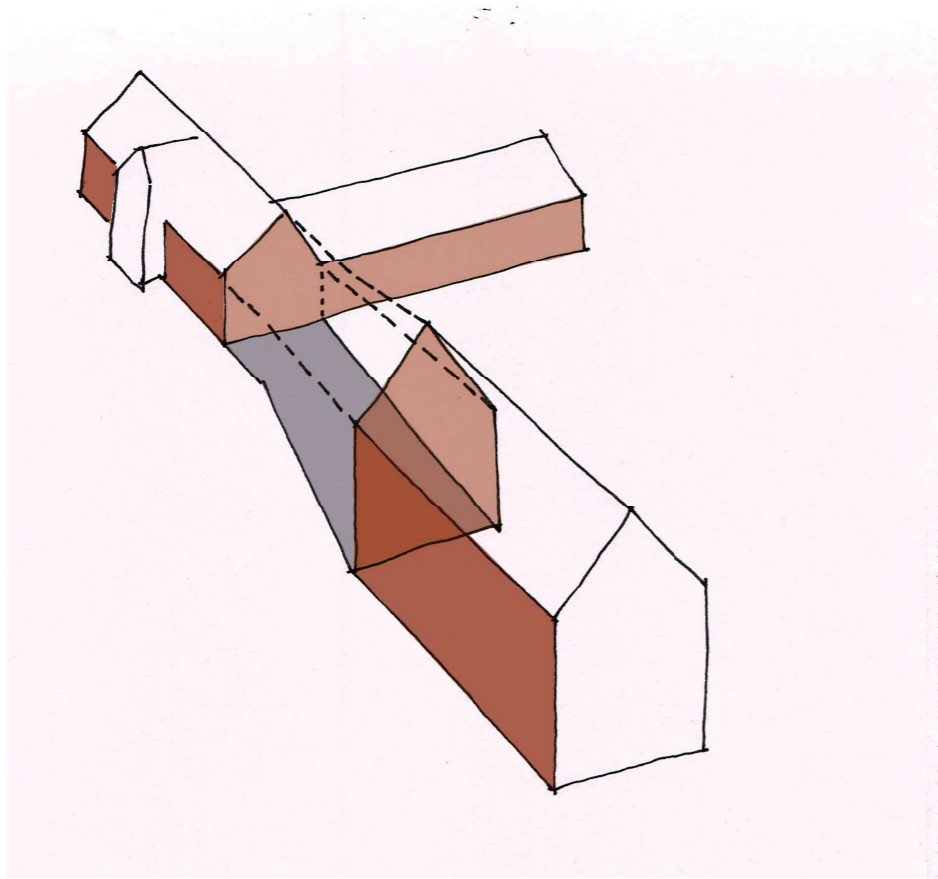
# Danø arkitektur - egne arbejder

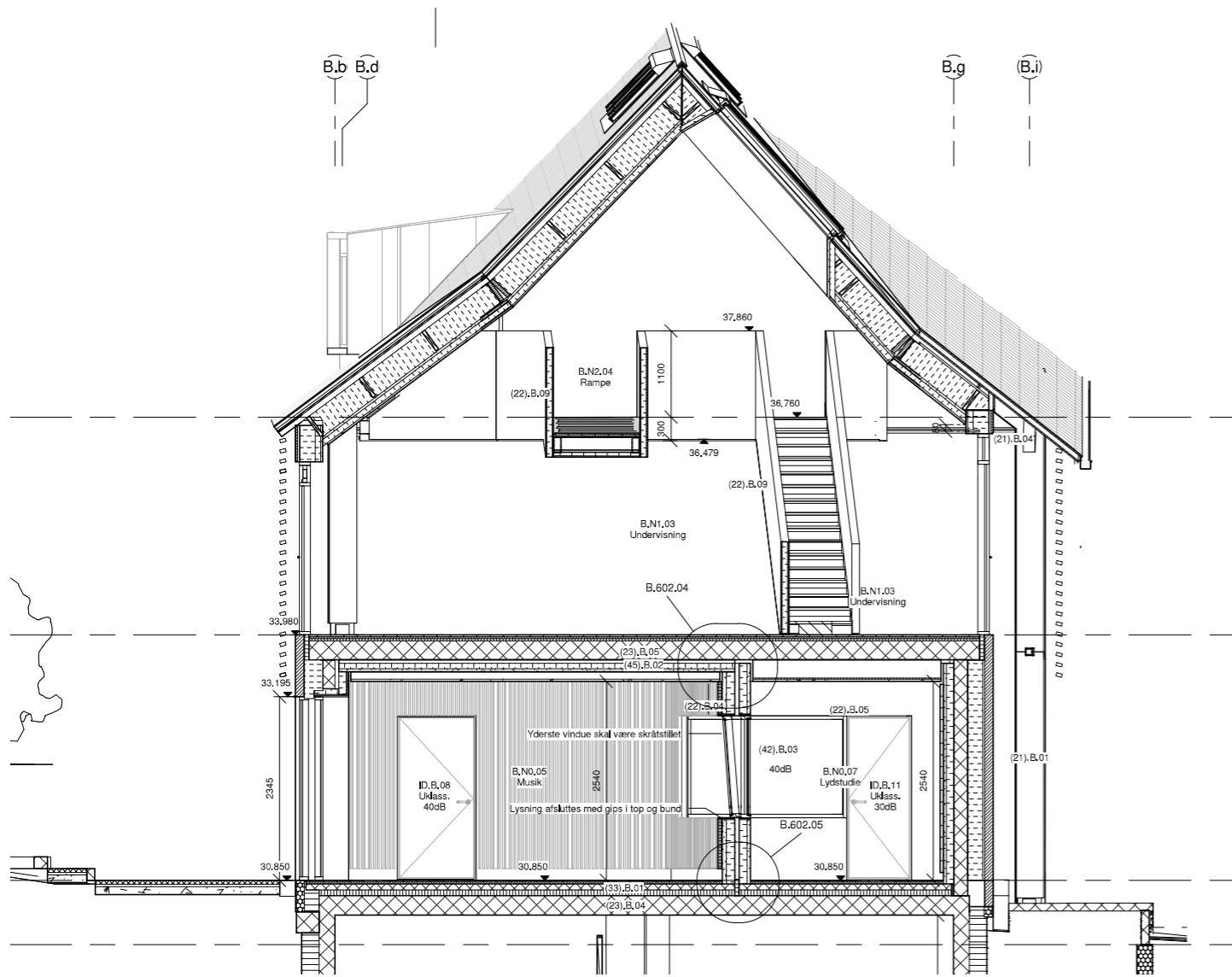
# Danø arkitektur - Ry højskole, 4 etaper 2018 - 19



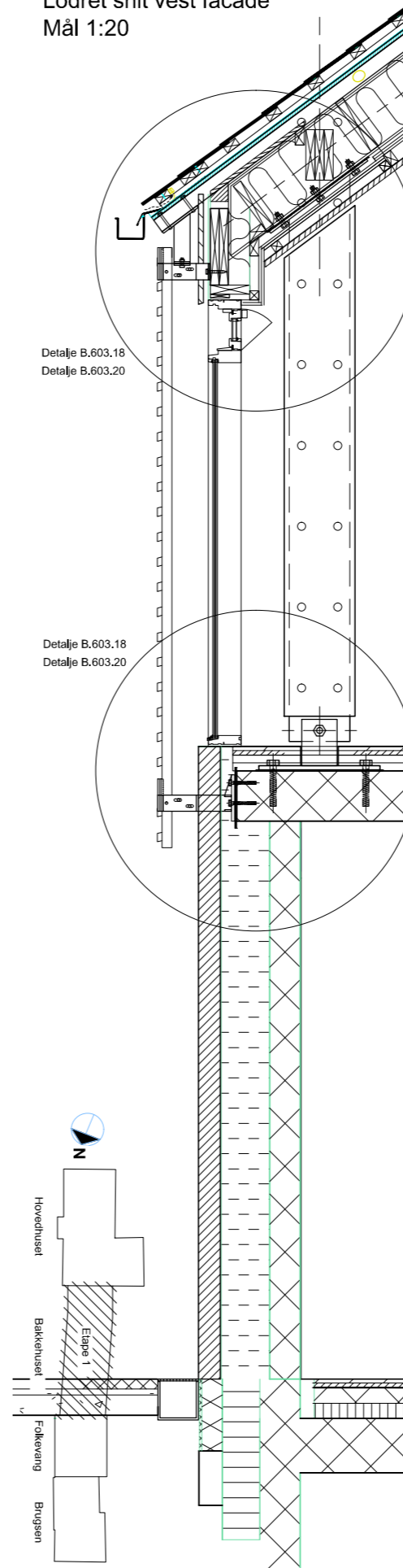




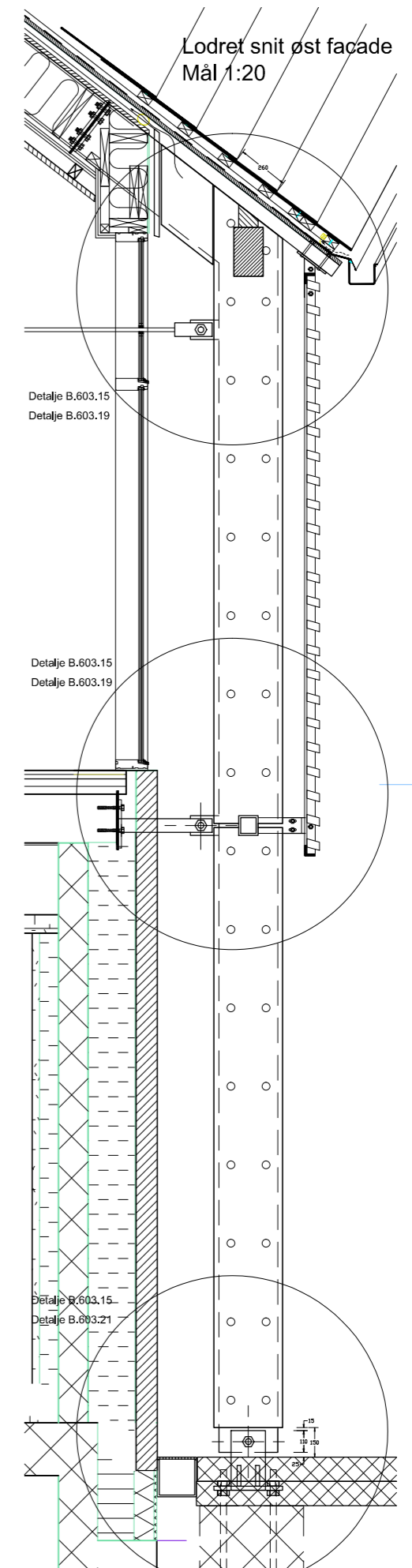


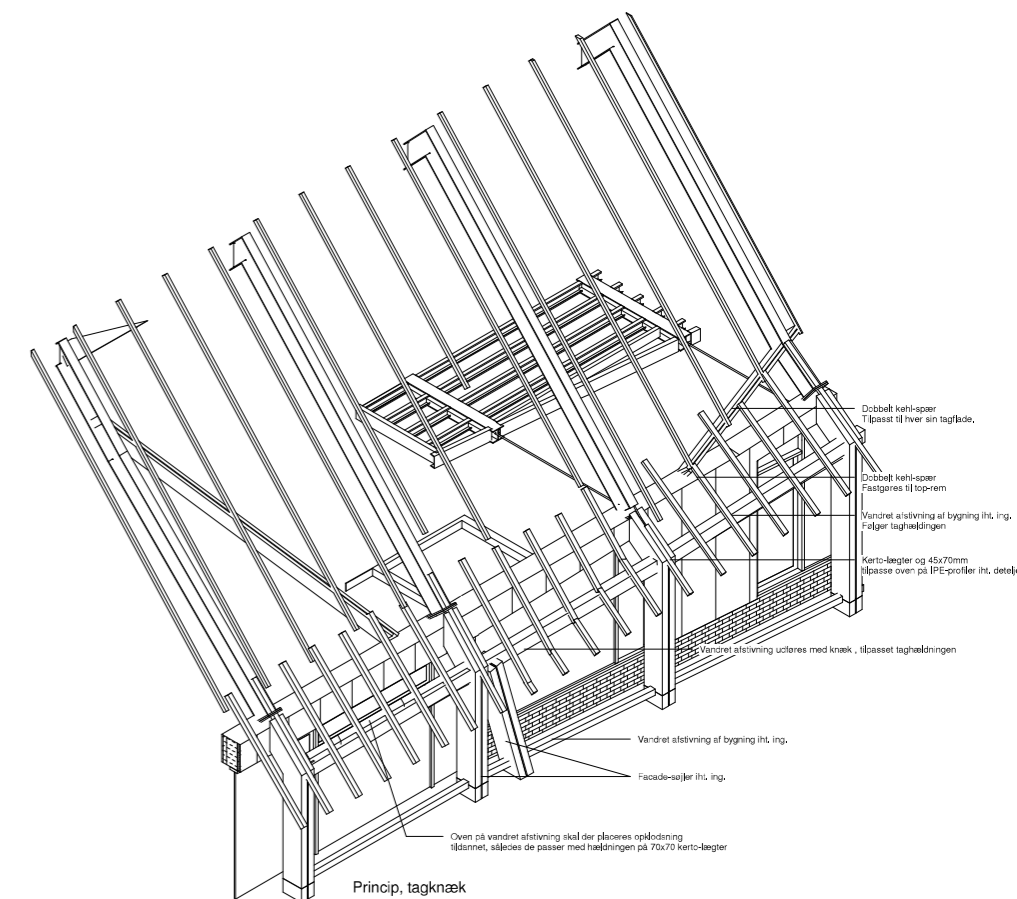


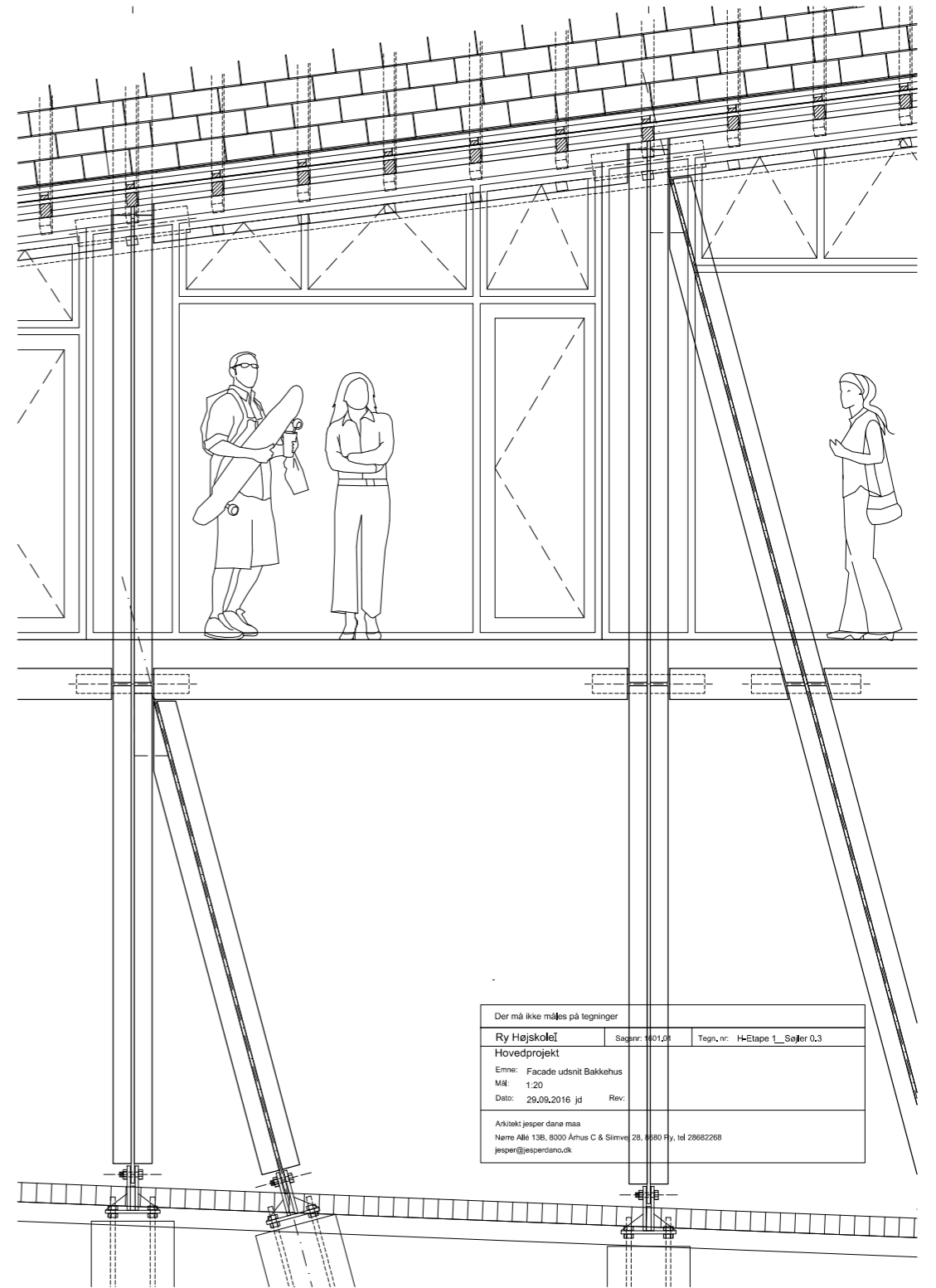
Lodret snit vest facade  
Mål 1:20



Lodret snit øst facade  
Mål 1:20





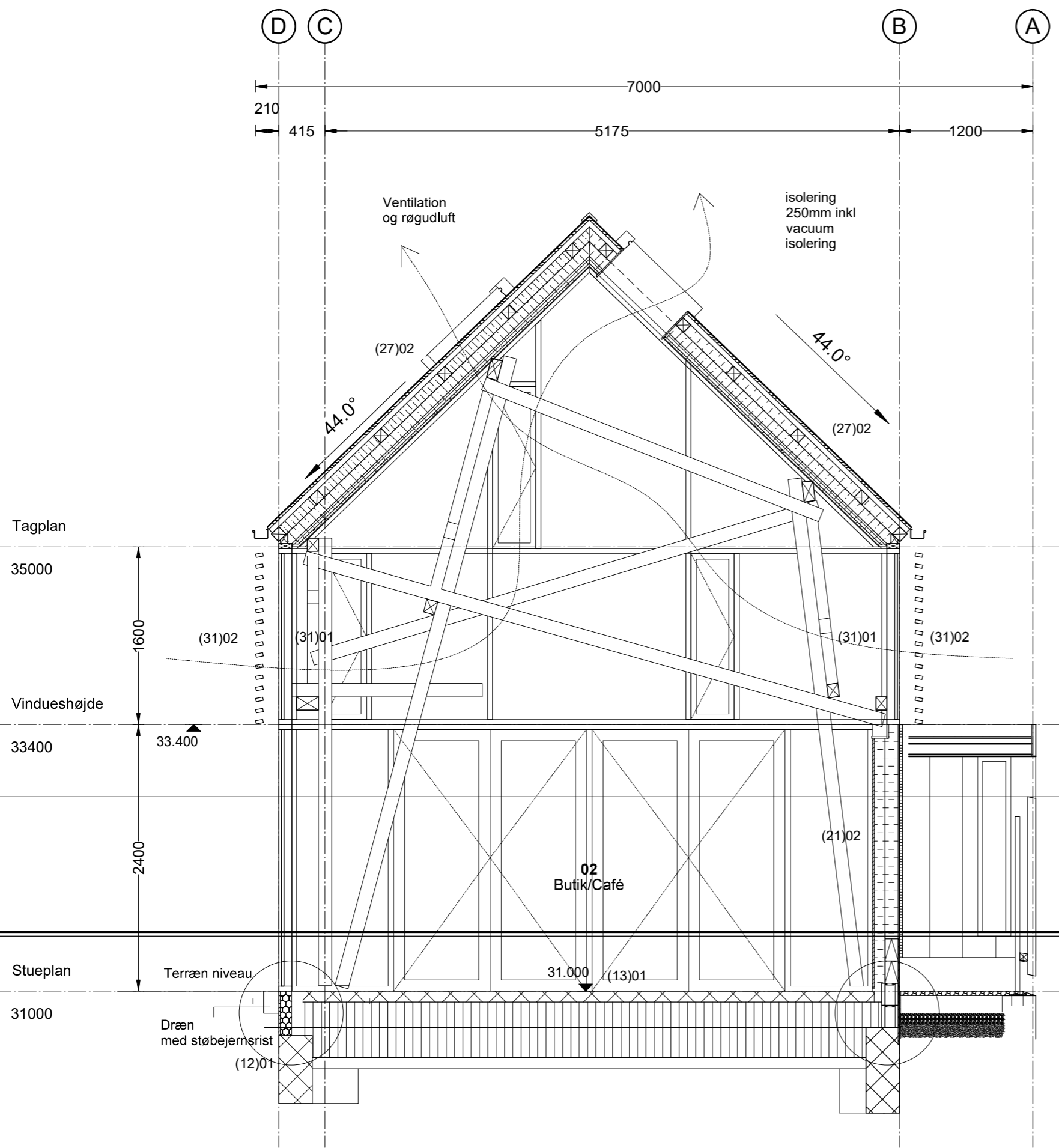


# Danø arkitektur - Ry Torvehal, 2 etaper 2019 - 2023

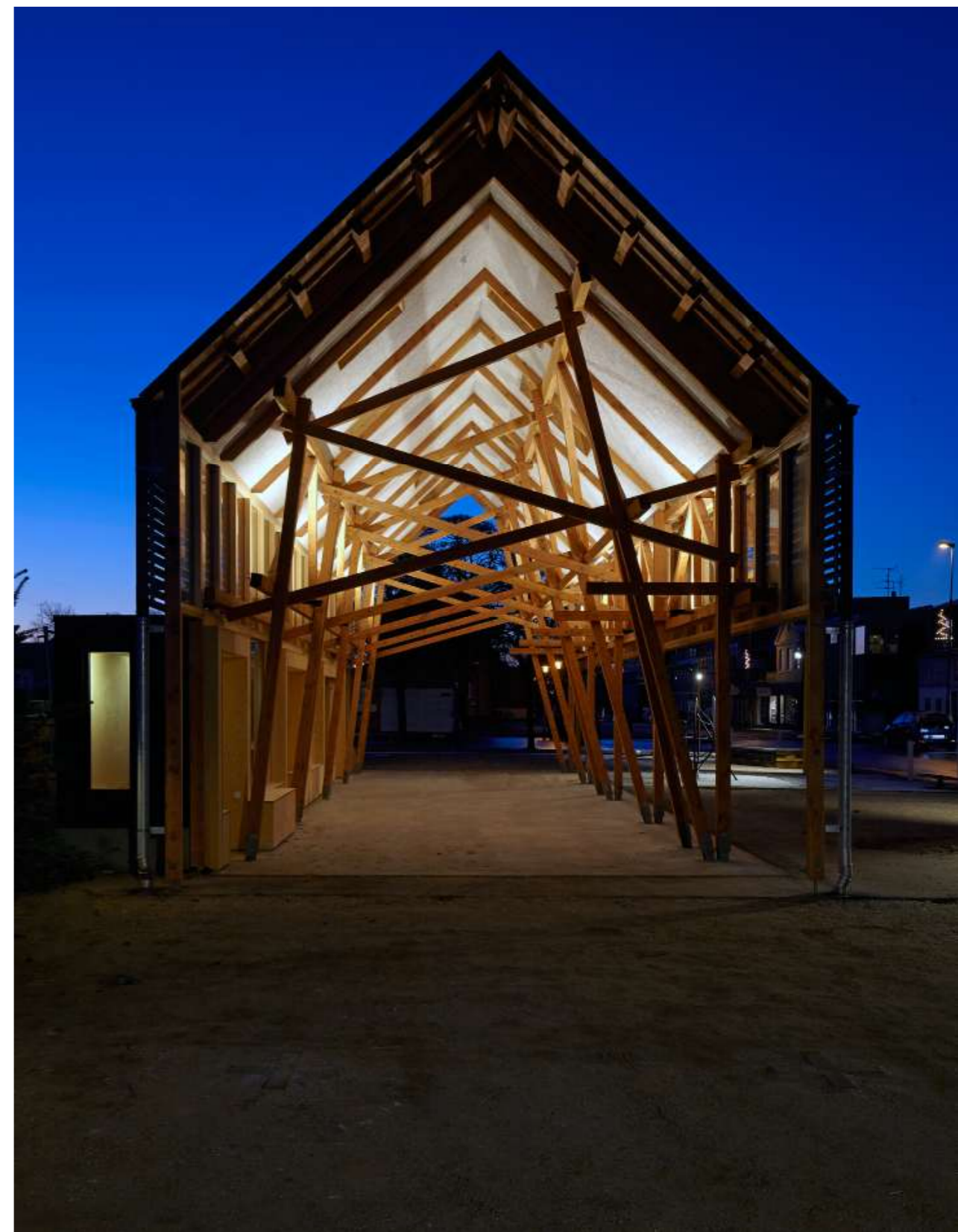


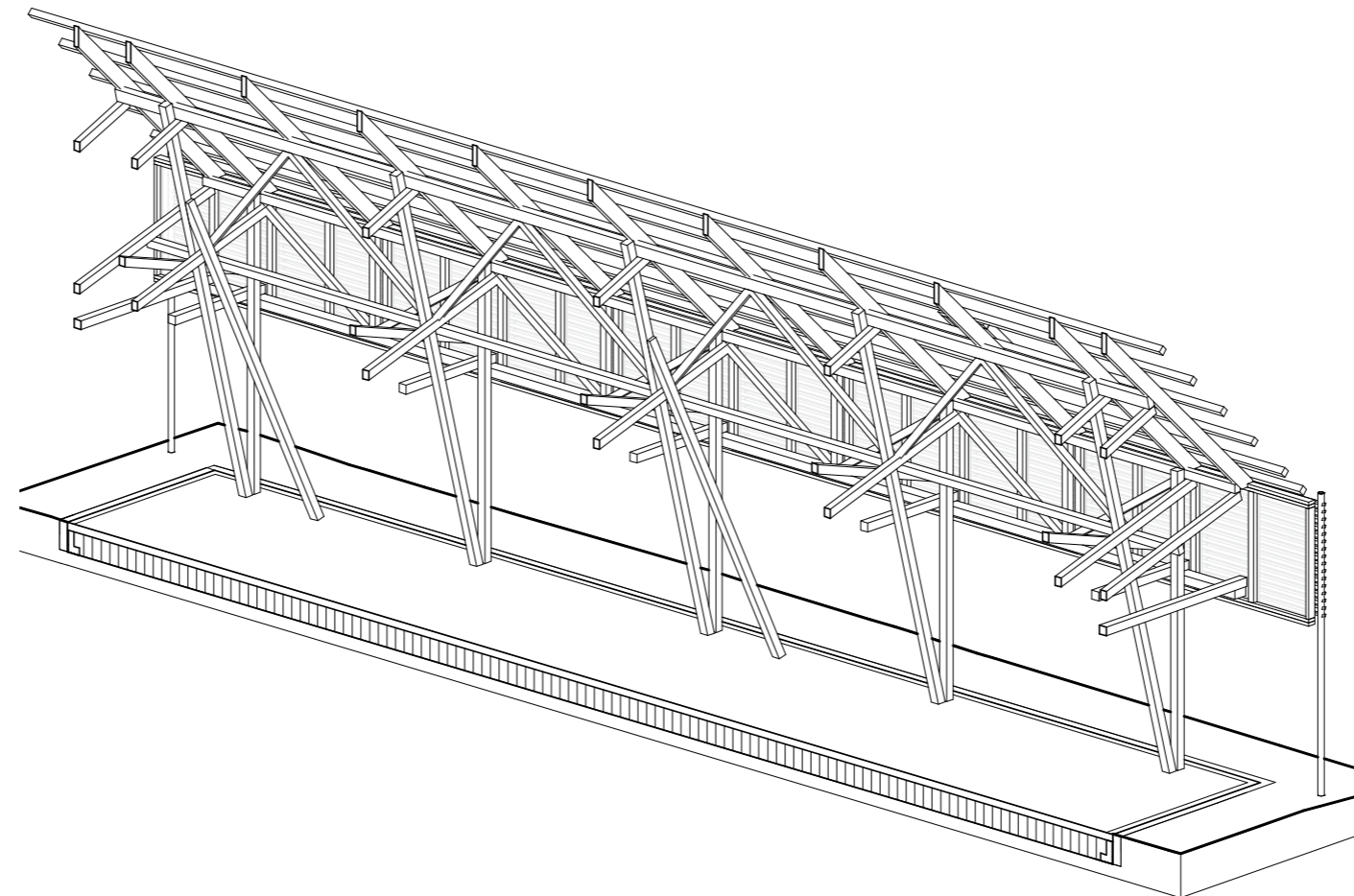
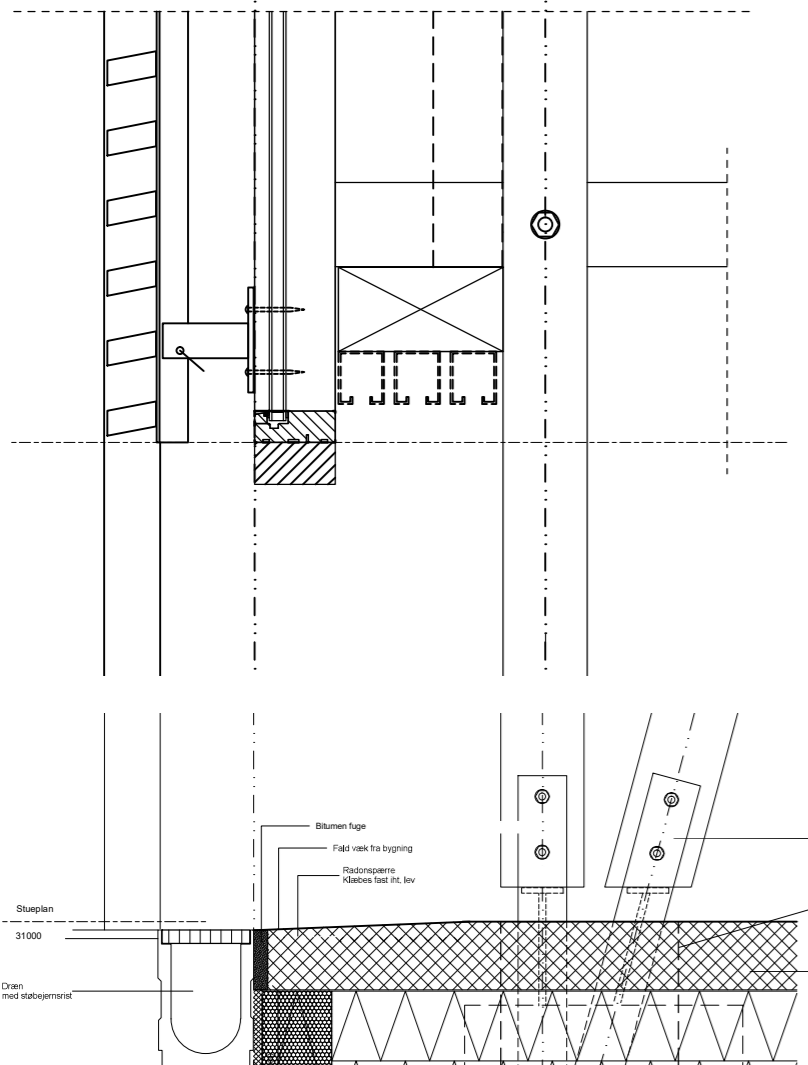
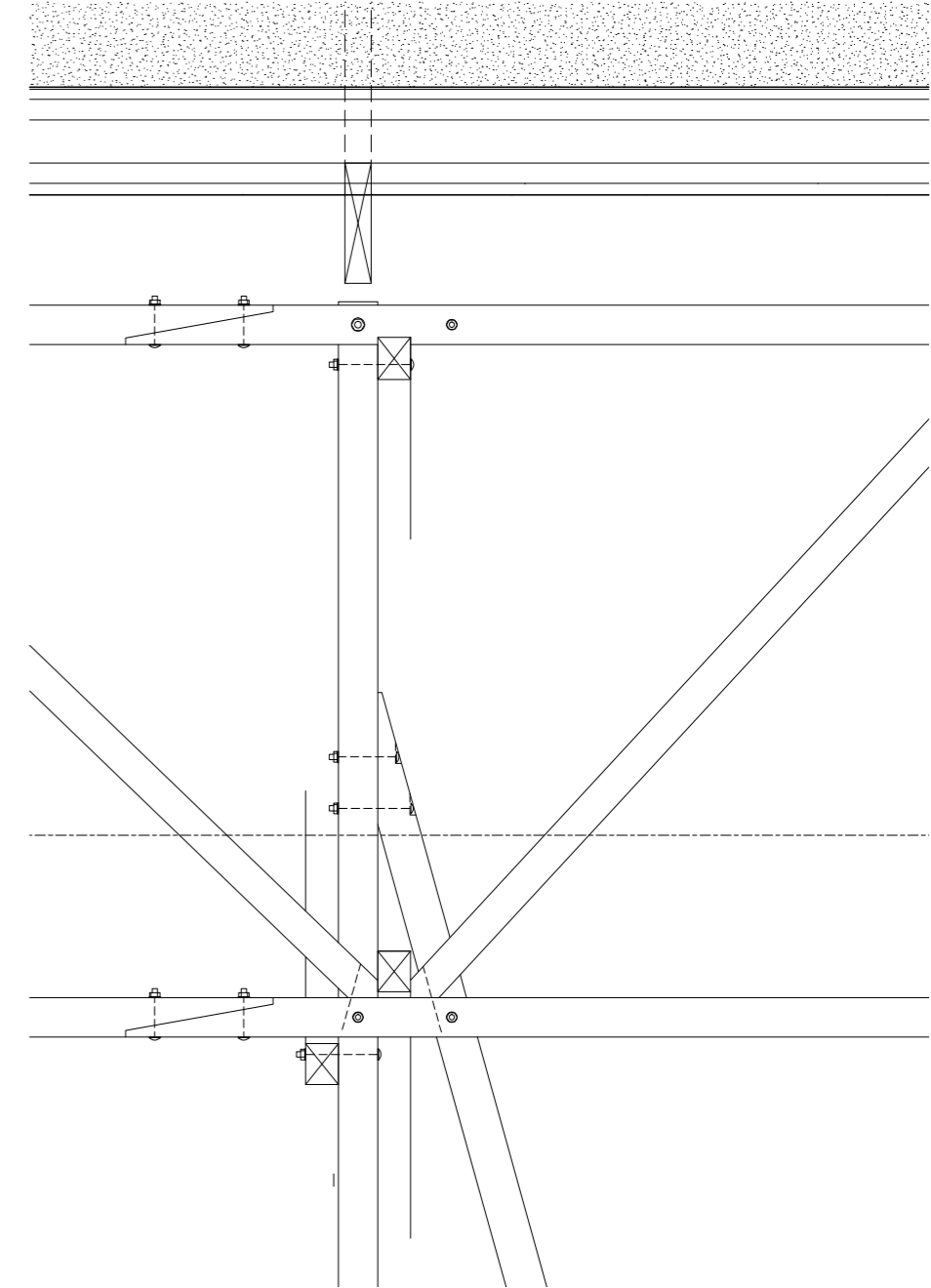
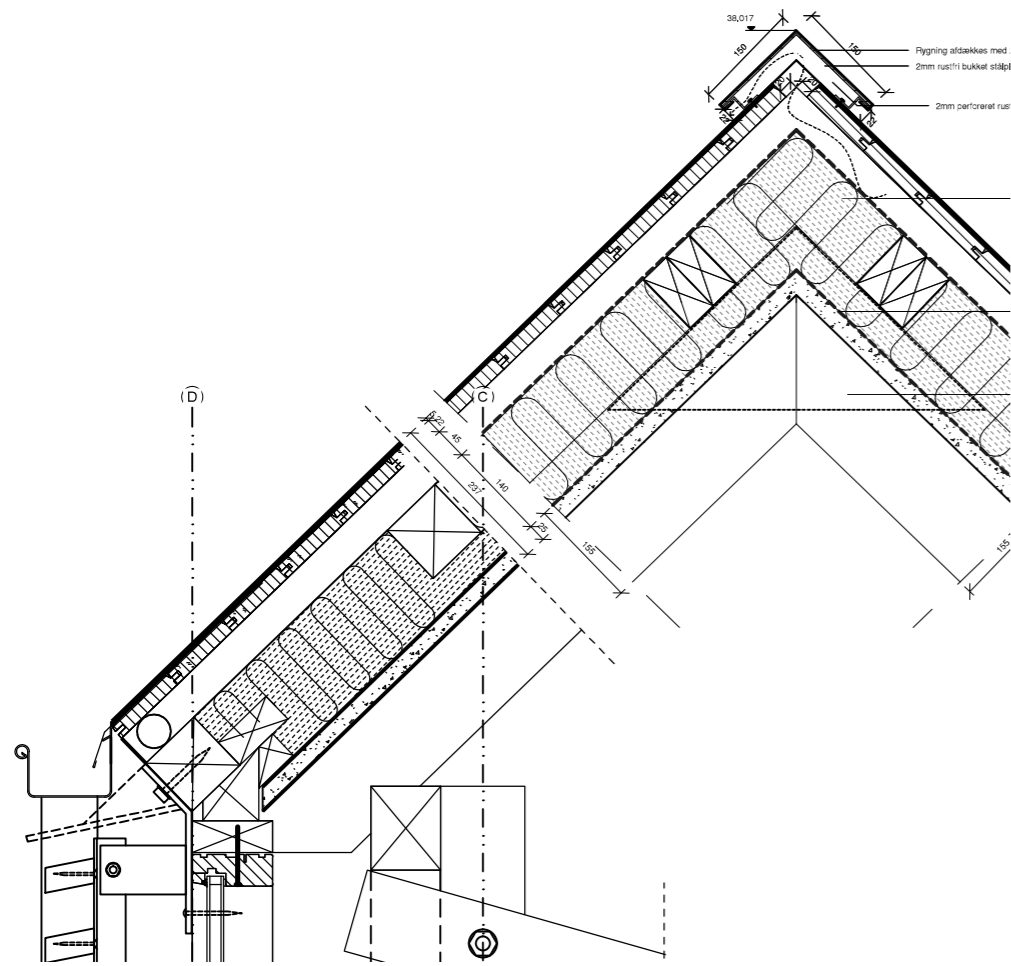




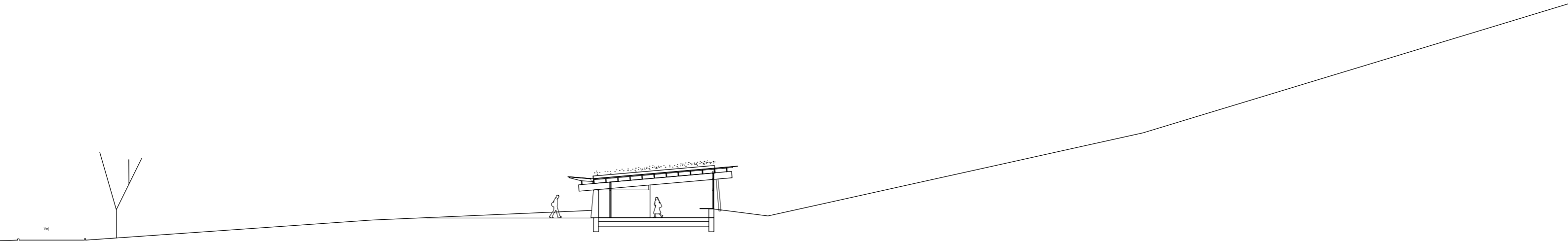


Hovedsnit BB  
1:50

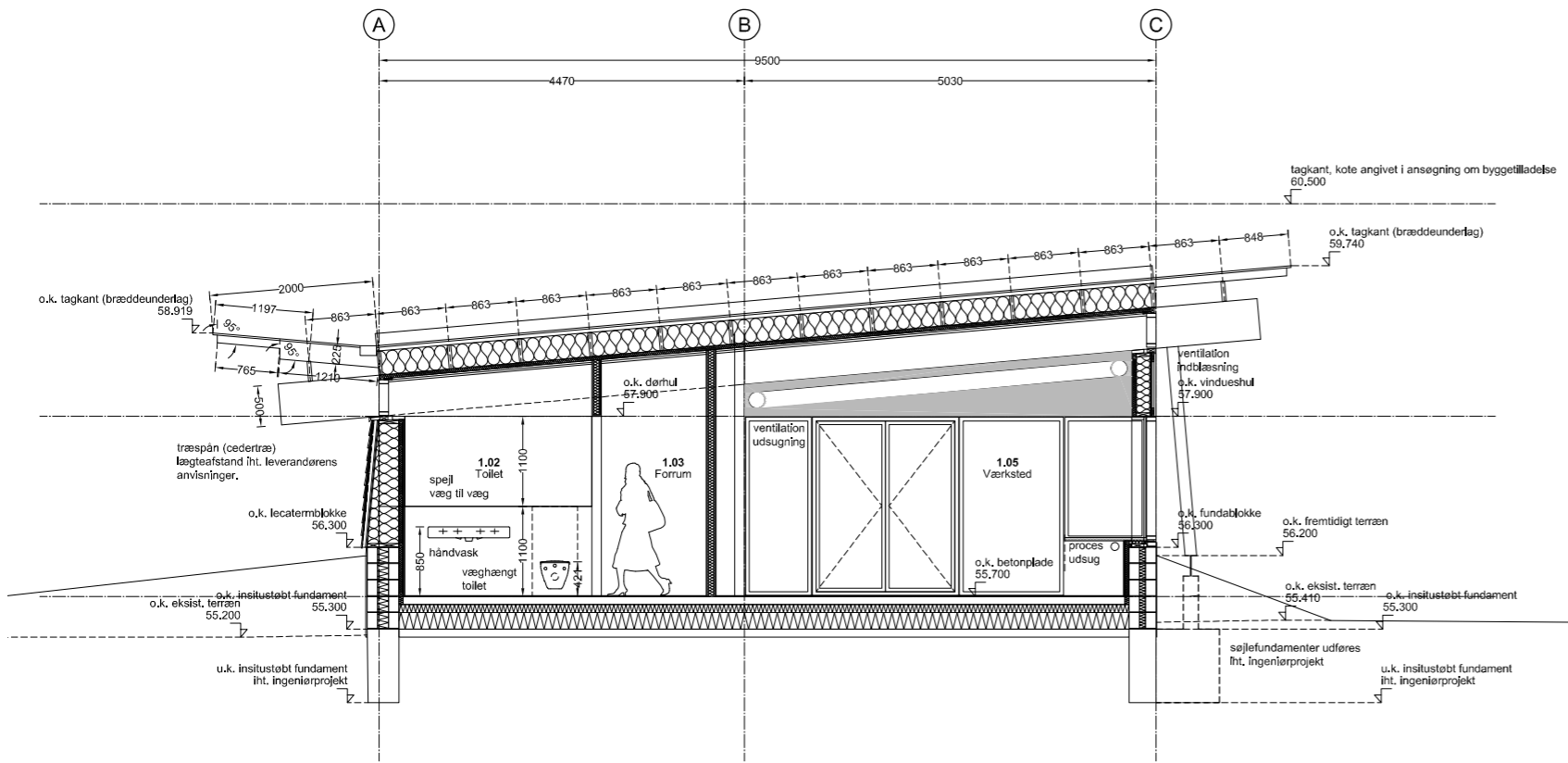




# Danø arkitektur - Argento Audio, GI Rye, 2021







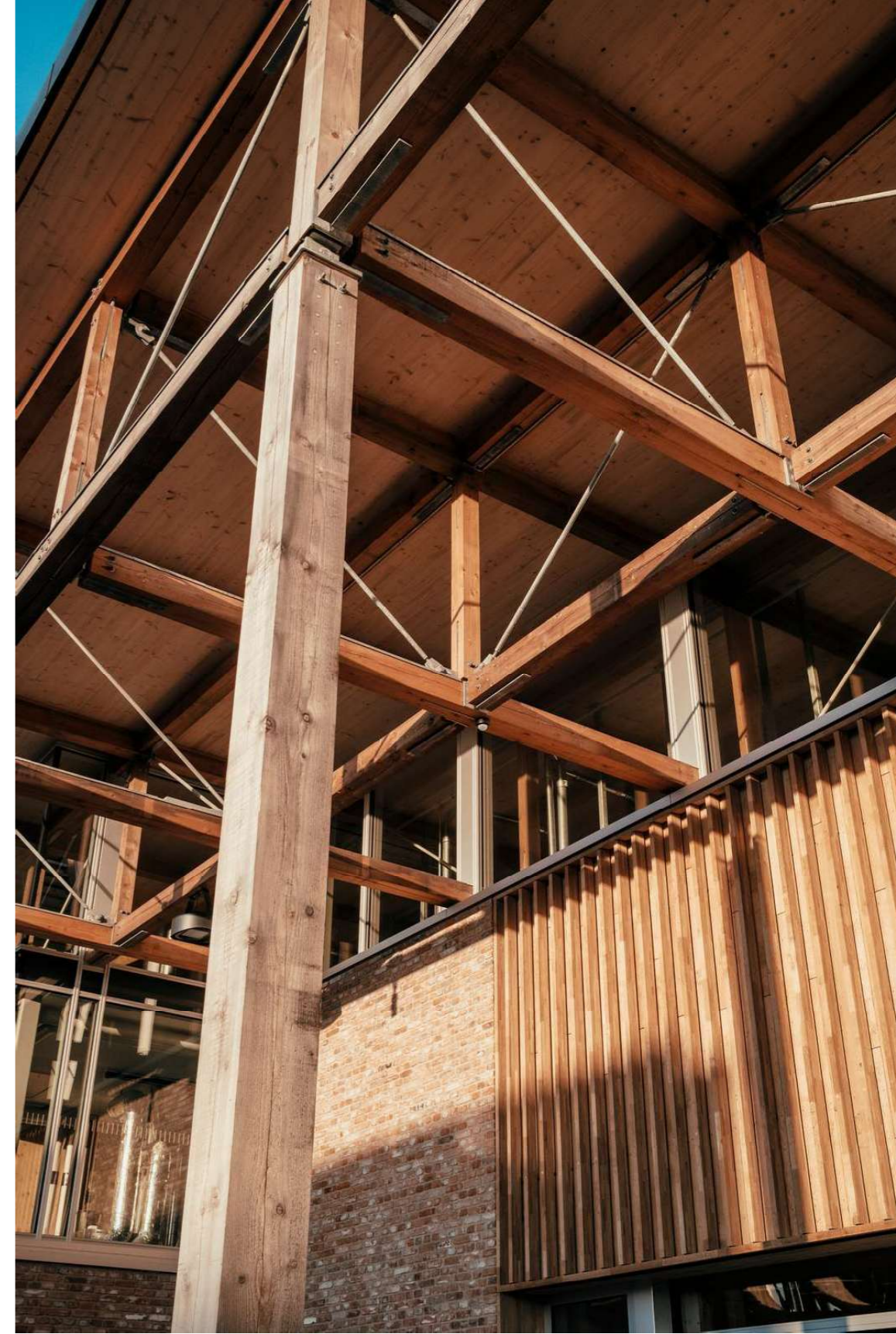
Danø arkitektur / Cubo - Håndværkskollegiet i Horsens, 2024

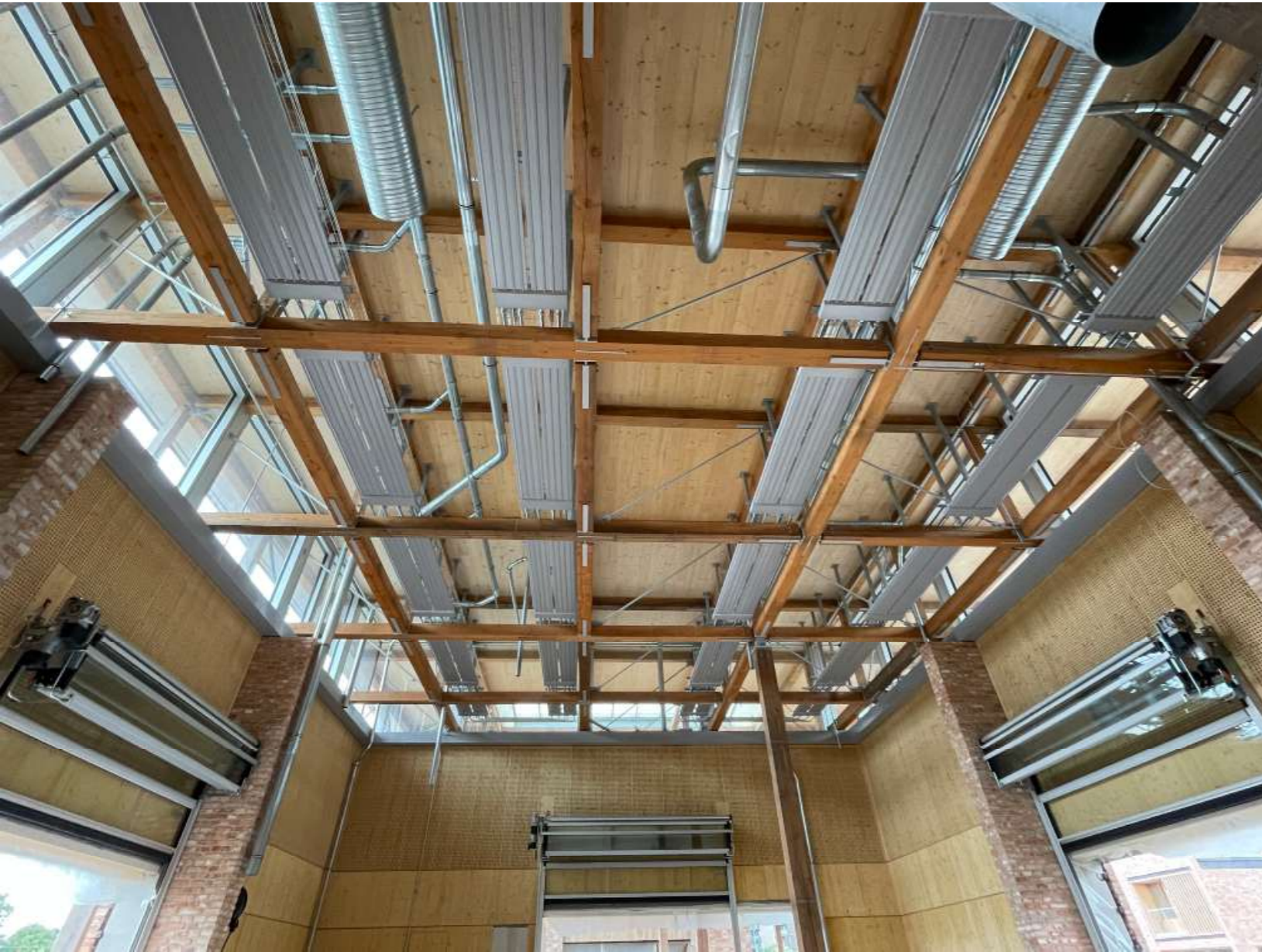


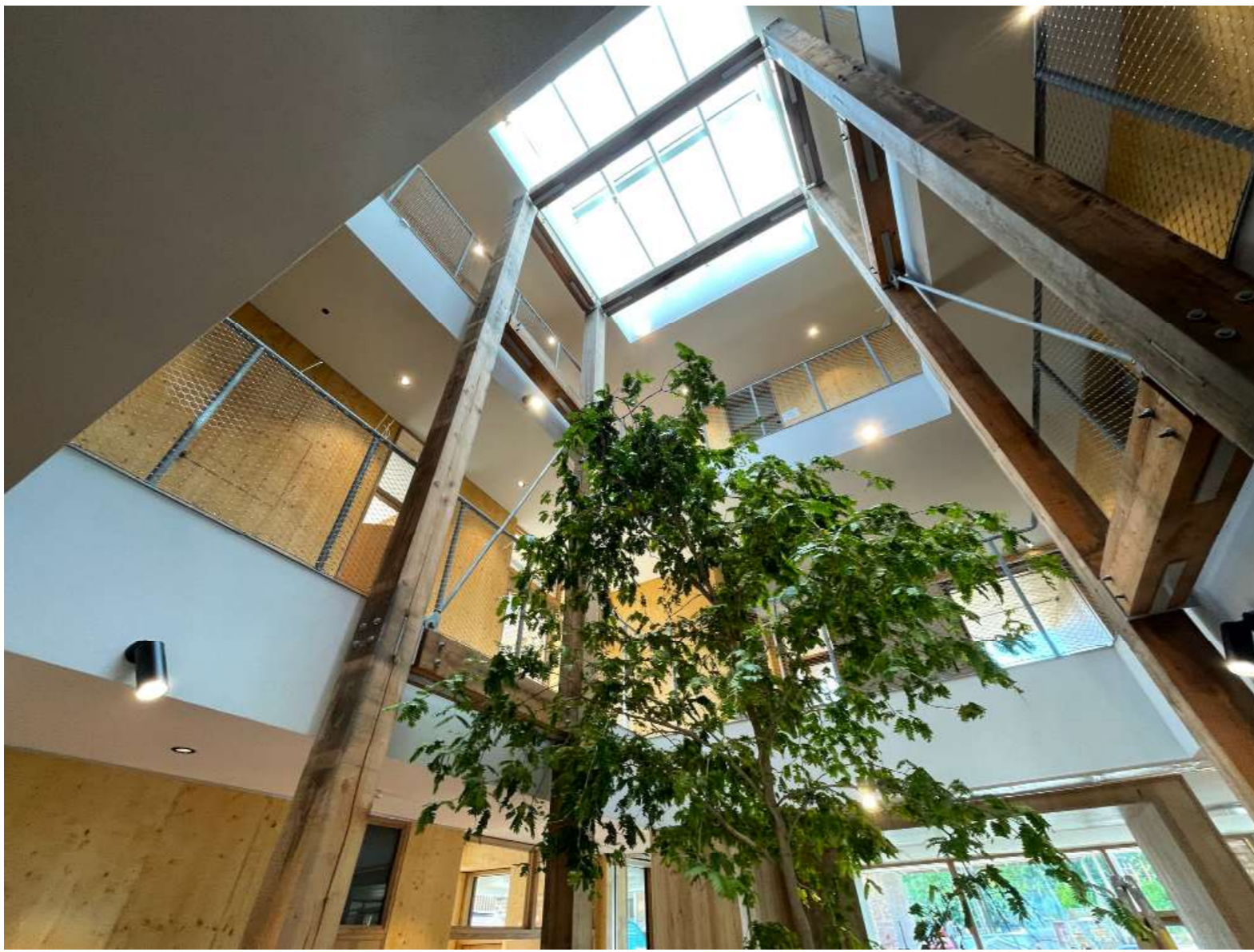












## Savværks Douglas tømmer til Håndværkskollegiet Horsens

- læsning hvert stykke tømmer
- flere skæringer for at fjerne spændinger
- kerne skal være i centerlinje
- lufttørring - ikke ovn
- jævn fugt
- tid
- rod-ender monteres nedad
  
- tømmer er cnc bearbejdet ved samlinger og drypnæser
- samlet i 9x9meter moduler - med stålbeslag - på jorden
- samlinger kan få luft og tørre efter regn
- boltes for at holde træet sammen omkring stål
- dorne for yderligere montage i beslag
- justerbare skrå trækband
  
- tagskive i store CLT elementer - synlige i lofter - inde og ude

